



**Wireless Controller
For PlayStation®3**

PSE1000

www.psyclonegamer.com

Precautions

Some medical studies have suggested that long periods of repetitive motion, coupled with poor habits may be linked to certain types of physical discomfort or injuries. It is important to take frequent breaks during game play, and if you feel aching, numbness, or tingling in your arms, wrists, or hands, consult a qualified health professional.

- Use this controller only as instructed. Read all instructions before operating controller.
- To prevent fire or shock hazard, do not expose this controller to rain or moisture.
- Do not disassemble. Refer to qualified personnel only.
- This controller should only be operated from the power source indicated in these directions or on the controller.
- Never push objects of any kind, other than authorized items, into the product as they may touch dangerous voltage points or short out parts that could result in fire or electrical shock.
- Failure to follow these directions may void the warranty.

Features

- RF 2.4GHz technology
- Turbo Button
- PS Button
- Quick and easy connection
- 4 channel lights on the PS3™ wireless controller side
- Powered by 2 AAA batteries (Not included)
- Unique aluminum faceplate design

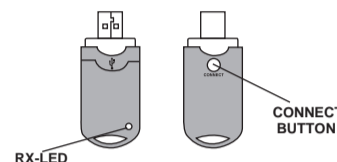
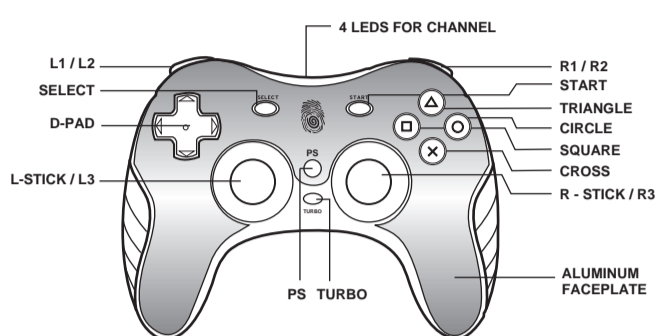
Start up

1. Open the battery door at the bottom of the PS3 wireless controller, and place 2 AAA batteries (not included) inside the compartment.
2. Connect the attached receiver with the usb port-1 of PS3™ console.
3. Power on your PS3™ console.
4. The controller will connect with the receiver automatically soon when the RX-LED of the receiver is illuminated.
5. Press the [PS] button to confirm the light is on.

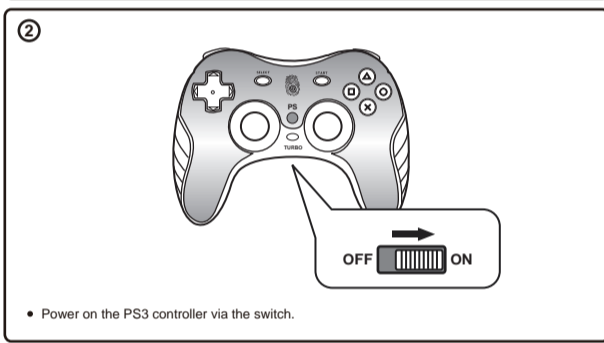
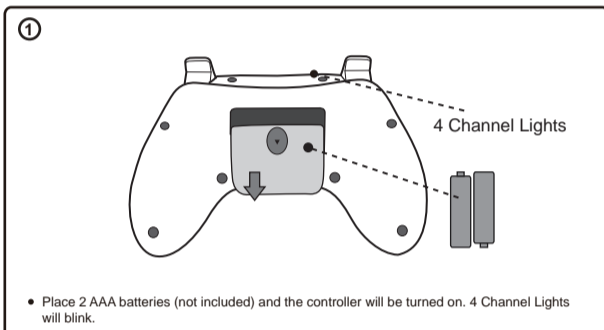
Note:

- If the connection failed, please redo the above steps 1-5 to ensure your operations are correct.
- Before you connect the 2nd PS3 wireless controller, please ensure the 1st PS3 wireless controller is pairing successfully.
- PS3 wireless controller DOES NOT support DUALSHOCK3™ or SIXAXIS™

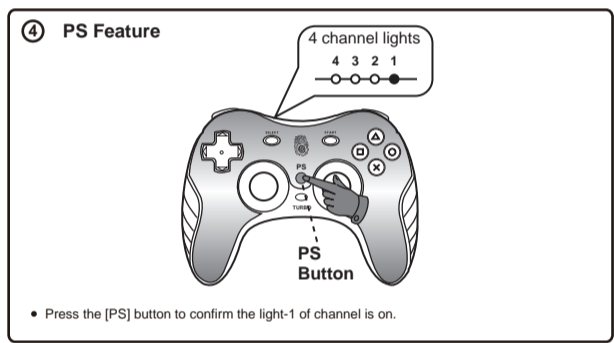
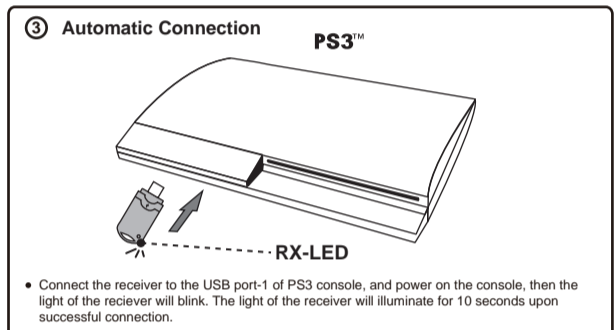
Diagrams



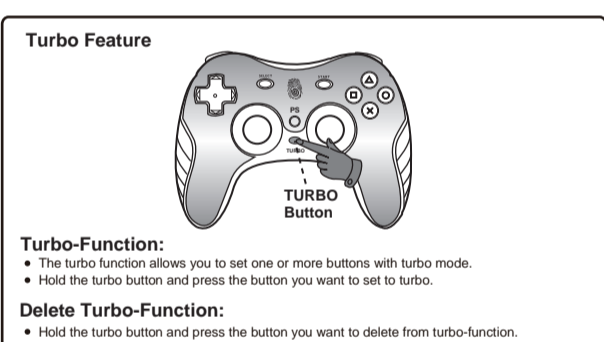
Diagrams



Diagrams



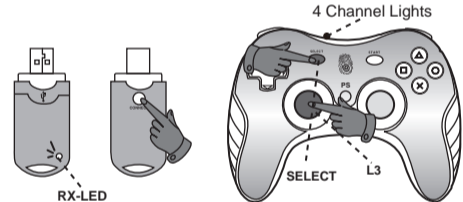
Diagrams



Trouble Shooting

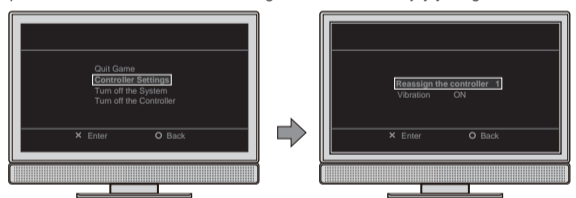
Pairing manually

- Normally, the controller connects with the receiver automatically. But if not, you can manually connect by the following steps: Press the Connect button of the receiver and then press and hold the Select and L3 button of the controller at the same time until the RX-LED is illuminated.



Reassign the controller

- Make sure the controller connects with the receiver successfully (Please refer to aforementioned instruction for how to connect) and you have started the game.
- Press the PS Button on the controller
- Choose Controller Settings to highlight it, and then press the X Button.
- Press X Button again, and then using the Up and Down Direction Button to roll the channel number to 1 (recommended) or 2 (if games support 2-player or you want to be the second player). And press the X Button to confirm it.
- Then press the PS Button to return to the game screen and enjoy your game.



Warranty

Psychone™ warrants to the original purchase of this product that it will be free from defects in materials and/or workmanship for a period of 5 years from the date of purchase. If a defect covered by this warranty is discovered within the 5 years warranty period, return the product, with your original sales receipt, to the retailer of purchase. The retailer of purchase will replace at its option, free of charge, any part determined to be defective, provided that a copy of the original sales receipt is included with the product returned.

This warranty is limited to the internal works of this product and the external housing. It will not apply if your Psychone product has been damaged by abuse, misuse, negligence, accident, modification, tampering, or by any other causes unrelated to defective materials and / or workmanship. Compensation or restoration of data loss and software are not covered. Psychone is not liable for loss of revenue or loss of use of equipment.

Repair or replacement as provided under this warranty is Psychone's exclusive prerogative. Any applicable implied warranties, including warranties of merchantability and fitness for a particular purpose, are hereby limited to 5 years from the date of purchase and are subject to the conditions set forth in this limited warranty. In no event shall Psychone or its affiliates be liable for consequential or incidental damages resulting from the breach of any express or implied warranties.

Some states do not allow limitations on how long an implied warranty lasts or exclusion or limitation of incidental/consequential damages, so the above limitation may not apply to you. This warranty gives you specific legal rights, and you may also have other legal rights which vary from state to state.

customerservice@psyclonegamer.com

1-800-315-0795